

624 LOOKOUT POINT AVENUE, ALEDO, TX 76008

3 BD | 3 BA | 2,710 SQ. FT | 7,449 SQ. FT LOT

OFFERED AT

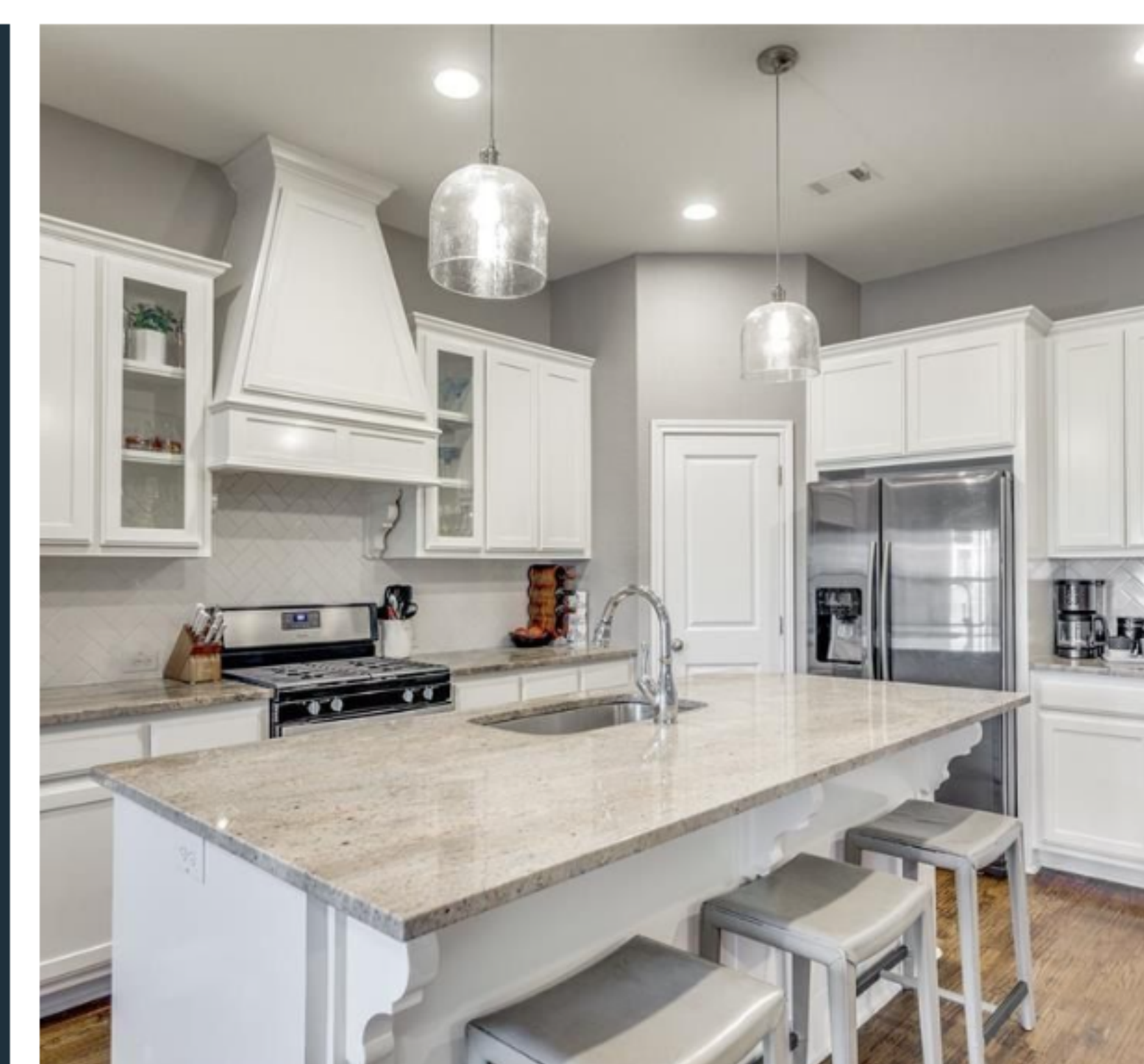
\$550,000



ABOUT THIS PROPERTY

Better than new and thoughtfully updated, this home offers refined living within an established community in one of Aledo's most sought after areas. An open-concept floor plan showcases hardwood floors, a cozy fireplace, and seamless flow into a bright kitchen featuring white cabinetry, granite countertops, SS appliances, and a generous island designed for both everyday living and entertaining. The well designed layout includes three bedrooms, a dedicated office ideal for working from home, and an expansive upstairs flex space offering versatility for a media room, playroom, or additional living area.

3
BED



3
BATH

2,710
SQ. FT.

7,449
SQ. FT. LOT



ROLANDO LOPEZ

Key Title Group

m: (214) 603-6263

e: rolando@keytitlegroupdfw.com



701 Highlander Blvd, Suite 410, Arlington, TX 76015



AREA REPORT

VERY CONVENIENT

This home is in a **very convenient** area. Some errands in this location require a car and most major services are within 1 mile.

- ☕ COFFEE 0.7 MI
- ⚖️ GYM 0.8 MI
- 👕 CLEANERS 1.9 MI
- 📄 PHARMACY 0.8 MI
- ⛽ GAS 0.8 MI
- 💰 ATM 1.9 MI
- 🛒 GROCERIES 0.8 MI
- 🏥 MEDICAL 1 MI
- 🎬 MOVIE THEATER 6.7 MI



SCHOOL REPORT

SCHOOLS IN YOUR AREA

The assigned schools are **above average** for the area.

- 7 RATING K-5 CODER ELEMENTARY SCHOOL ASSIGNED
- 9 RATING 10-12 ALEDO HIGH SCHOOL ASSIGNED
- 7 RATING 6-8 ALEDO MIDDLE SCHOOL ASSIGNED



OUTDOOR REPORT

THE GREAT OUTDOORS

This home is located near a variety of outdoor activities.

POPULAR

- 🏌️ GOLF COURSE SPLIT RAIL GOLF CLUB (2.2 MILES)
- 🌳 PARK WHITE SETTLEMENT SPA AND RESORT (6.8 MILES)



FOOD REPORT

NEIGHBORHOOD EATS

This home is located near 7 moderately priced restaurants and has an **average** variety of cuisines.

BY CATEGORY

- FAST FOOD 2
- AMERICAN 1
- ITALIAN 1
- STEAKHOUSES 1
- CAFES, COFFEE AND TEA 1
- BAKERIES 1

